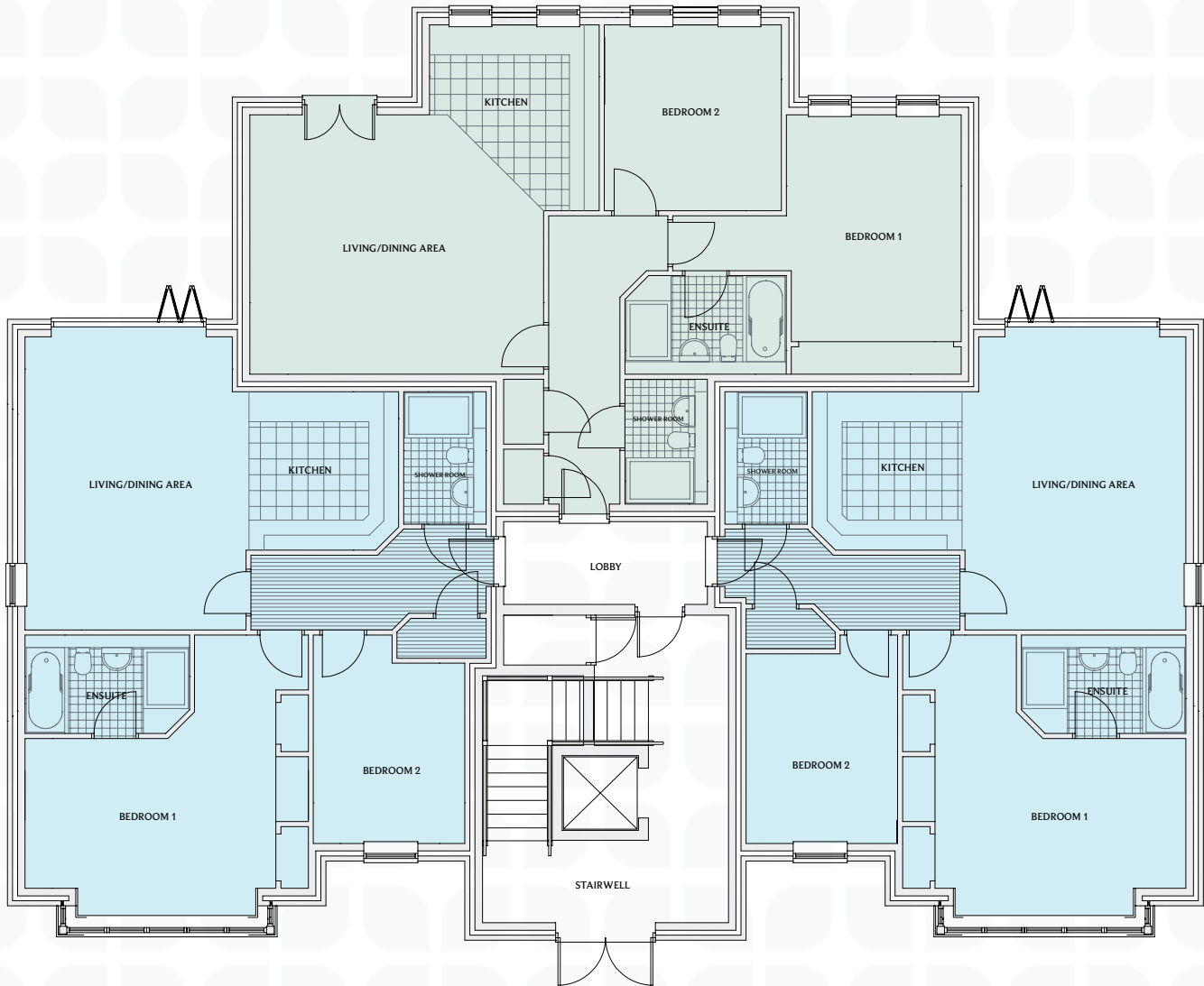


FLOOR PLANS



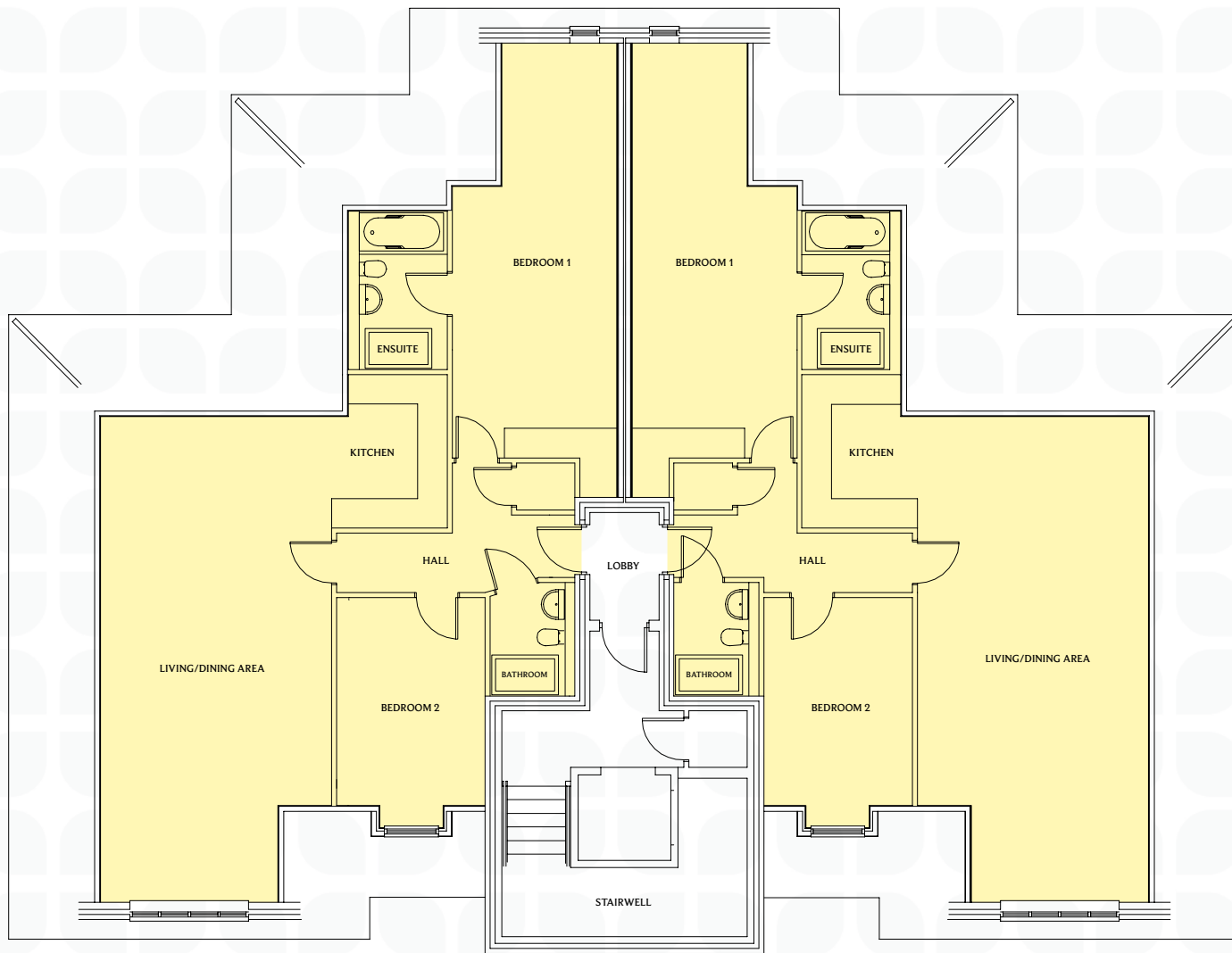
GROUND/FIRST FLOOR APARTMENTS

TYPE A - 1004 SQ FT (93.3 SQ M)

LIVING / DINING AREA	13' 7" x 19' 3"	4.15m x 5.88m
KITCHEN	10' 11" x 10' 5"	3.34m x 3.76m
BEDROOM 1	18' 7" x 18' 2" (max)	5.68m x 5.56m (max)
BEDROOM 2	9' 11" x 13' 8" (max)	3.04m x 4.18m (max)
ENSUITE	10' 9" x 6' 5" (max)	3.30m x 1.98m (max)
SHOWER ROOM	5' 4" x 8' 8" (max)	1.65m x 2.65m (max)

TYPE B - 1048 SQ FT (97.4 SQ M)

LIVING / DINING AREA	19' 3" x 17' 7" (max)	5.89m x 5.20m (max)
KITCHEN	11' 2" x 12' 2" (max)	3.40m x 3.73m (max)
BEDROOM 1	11' 5" x 17' 1"	3.50m x 5.20m
BEDROOM 2	11' 8" x 12' 3" (max)	3.55m x 3.73m (max)
ENSUITE	10' 7" x 6' 6" (max)	3.23m x 1.98m (max)
SHOWER ROOM	5' 4" x 8' 2" (max)	1.65m x 2.50m (max)



PENTHOUSE APARTMENTS

TYPE C - 1196 SQ FT (111 SQ M) INTO EAVES / 1076 SQ FT (100 SQ M)*

LIVING / DINING AREA	15' 4" (max) x 33' 6"	4.67m (max) x 10.2m
KITCHEN	7' 8" x 10' 2"	2.34m x 3.11m
BEDROOM 1	10' 11" x 27' 3" (max)	3.33m x 8.30m (max)
BEDROOM 2	9' 10" x 13' 9"	3.00m x 4.21m
ENSUITE	5' 10" x 10' 6"	1.77m x 3.20m
BATHROOM	5' 8" x 7' 7"	1.72m x 2.30m

*measured to RICS Code of Measuring Practice (6th Edition)